



GeoTripz (Pty) Ltd, an ESD partner with AfriGIS (Pty) Ltd

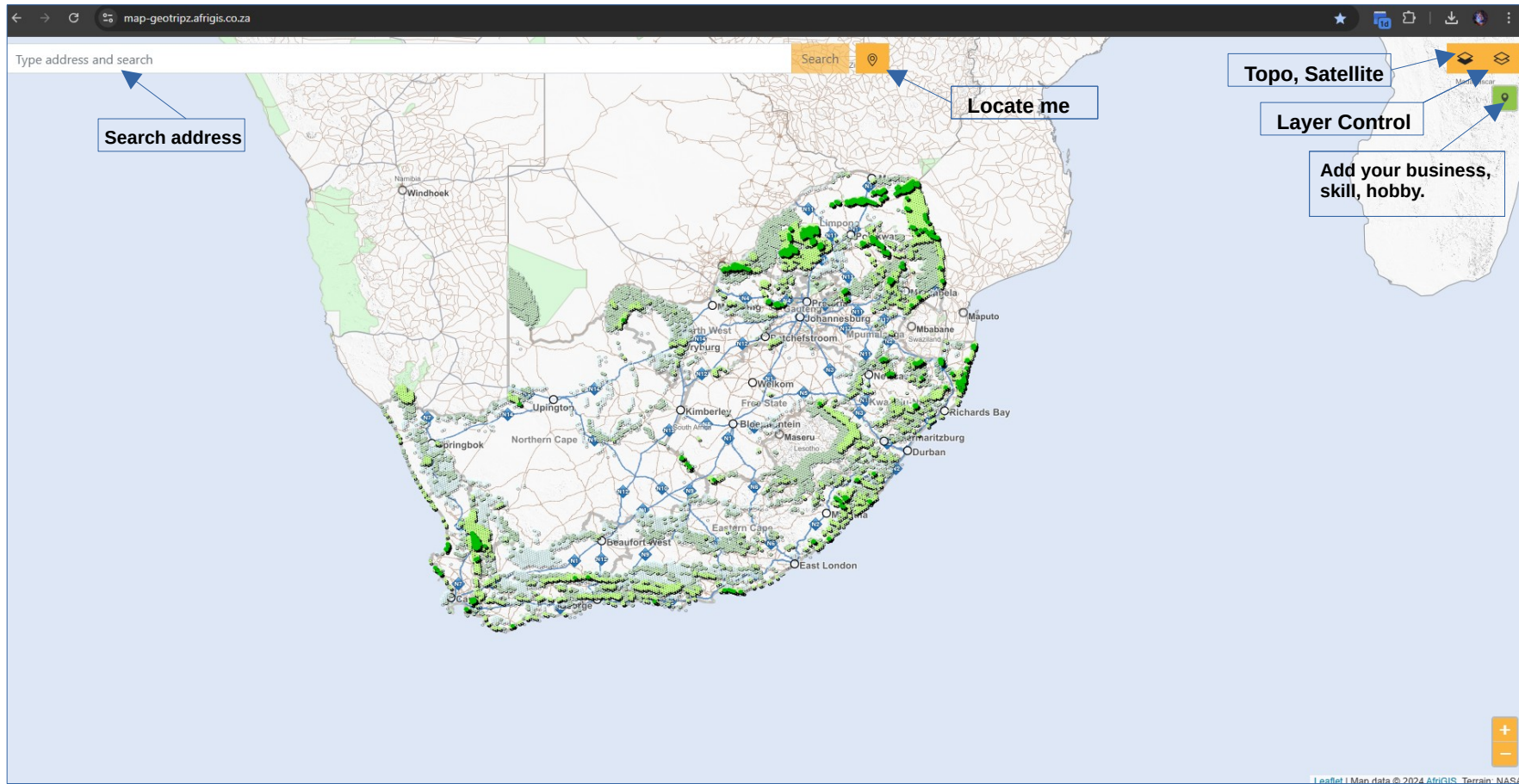


A Participatory Mapping ToolKit for the Tourism and Hospitality Sector.

"reimagine trade routes"

GeoTripz Spatial Solutions, (Z for Zulu)

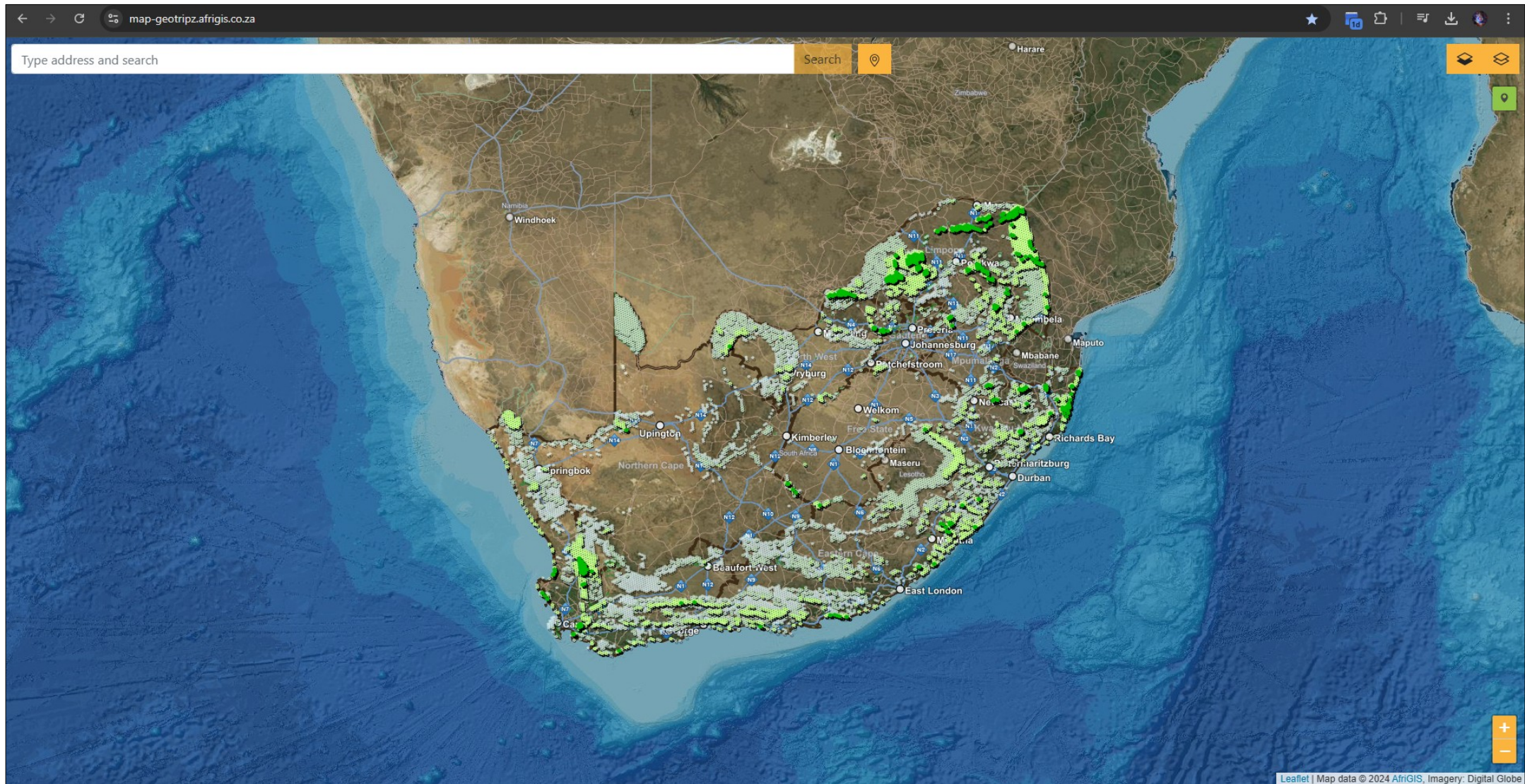
<https://map-geotripz.afrigis.co.za/>



Based on scientific research and 9 years of discovery, we launched our public revised version in September 2024. Our 'green honey-combed' pristine h3 grid cells are in essence biodiversity hotspots, inspired by NEMA (National environmental management act) and the Tourism Act 3, 2014.

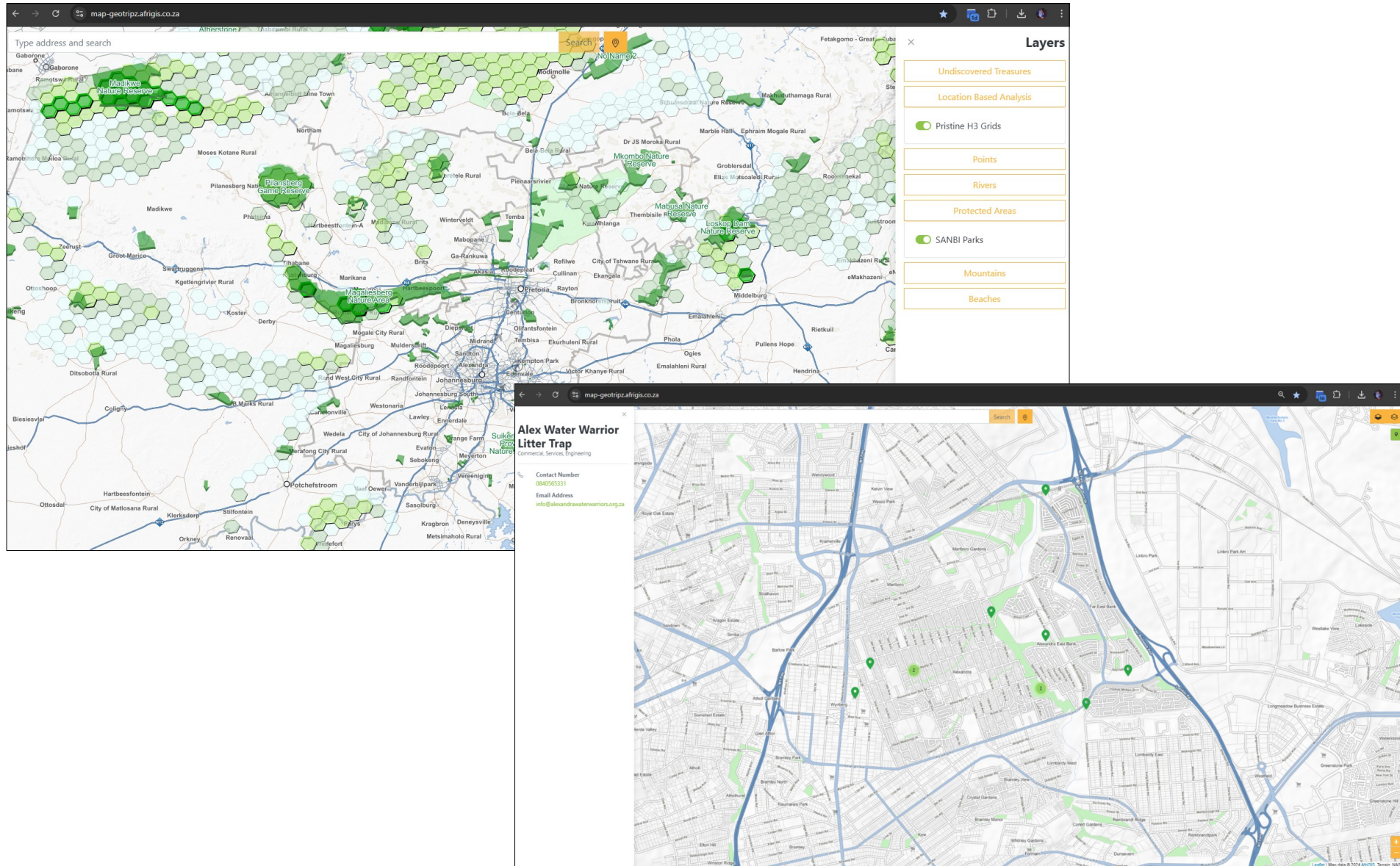
https://uir.unisa.ac.za/bitstream/handle/10500/10012/dissertation_govindasamy_k.pdf?sequence=1&isAllowed=y (Research Link)

Our grids are designed on the h3 methodology, scalable within our PostGres DB, & designed for swift enhancement and cross-pollination of 3rd party APIs.



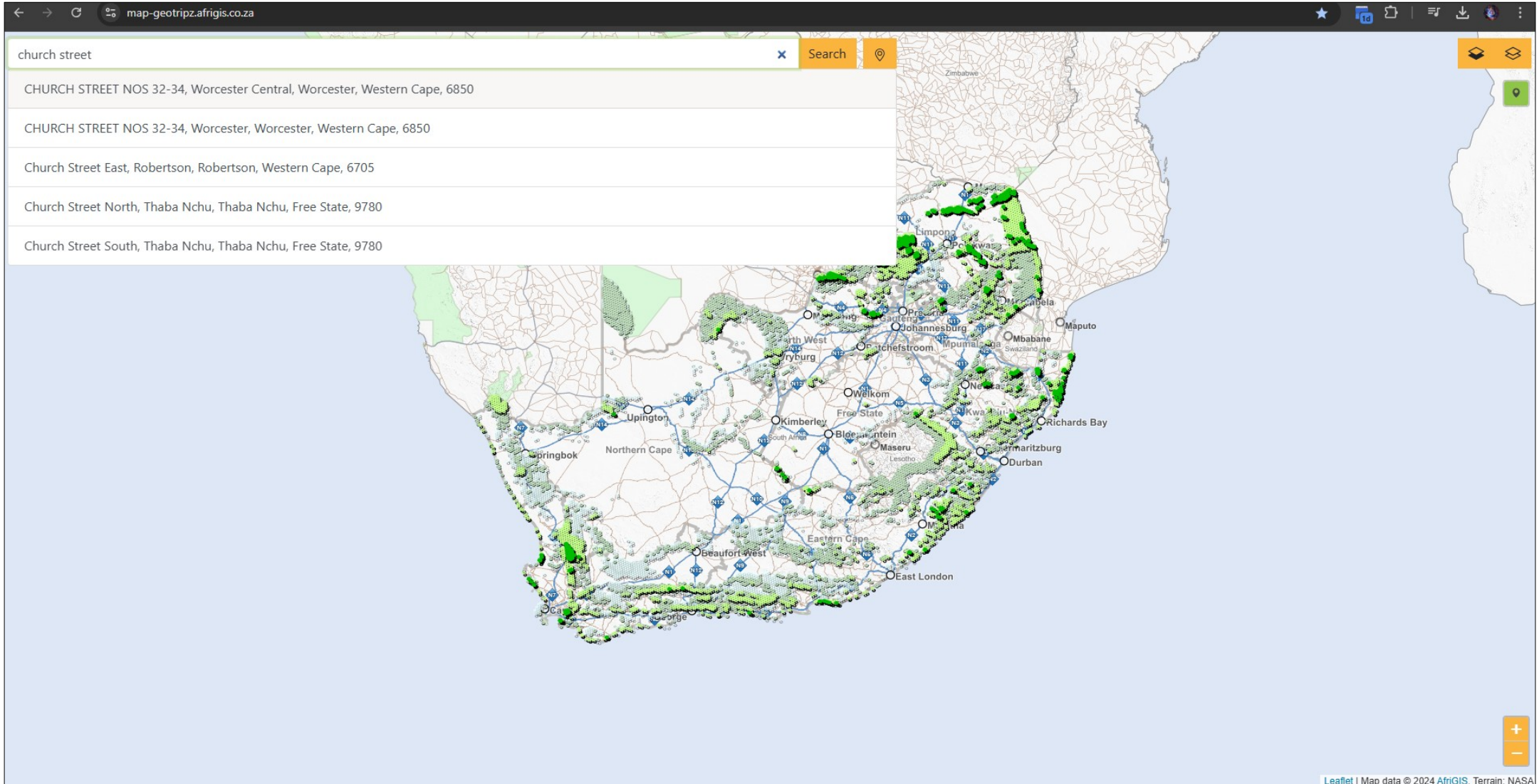
The darker the 'green honey-combed' grid cell, the higher the concentration of natural resources and fewer human related infrastructure.

The conservation zones as illustrated by the Sanbi (South African National Biodiversity) when overlayed with the h3 pristine grids starts 'painting the picture' of corridors that would impact communities and businesses, as aligned to SANparks2040 vision (for e.g.)



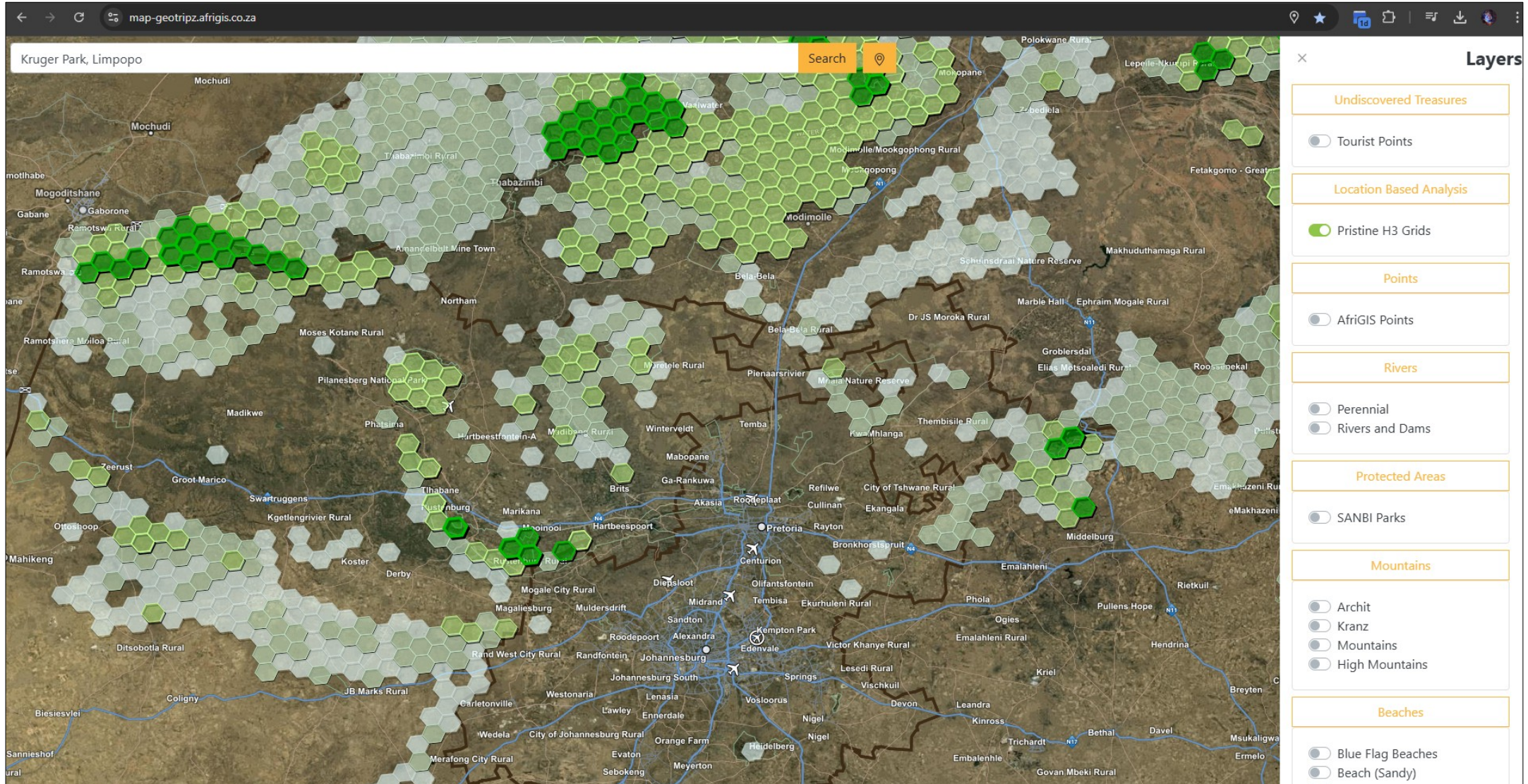
Currently assisting Alexandra Water Warriors to map their biodiversity corridors as they plan to plant 30k trees over the next 6 months. Our goal is to verify and validate the formal and informal businesses that will be impacted by the project. <https://alexandrawaterwarriors.org.za/>

With over 50million + searchable addresses, a client can easily locate their address to begin there market analysis.



GeoTripz mission is to correct, collect and consolidate information from townships and communities that will enable more precise and compliant mapping of sites that have been historically difficult to map.

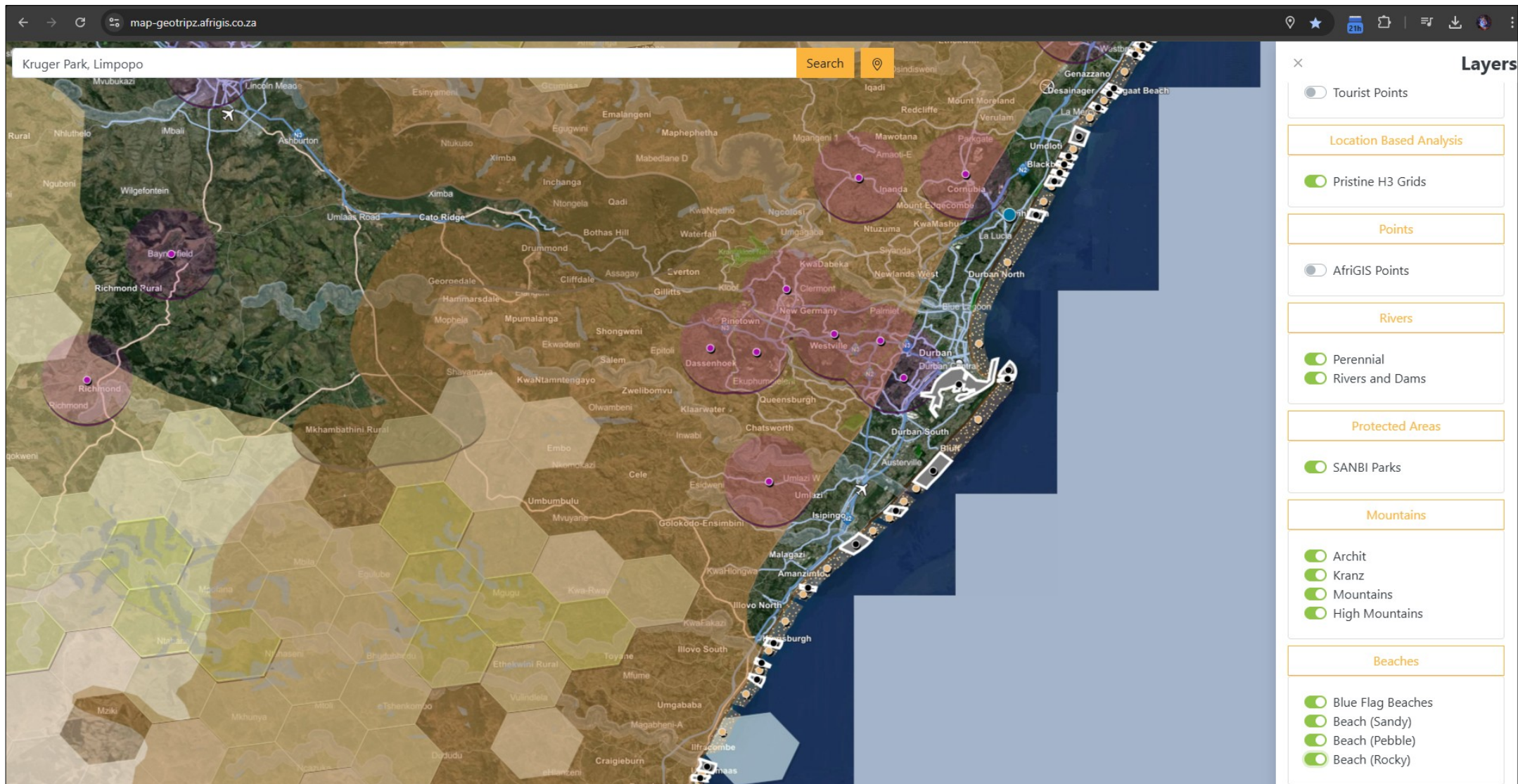
The client will be trained on how to visualise their site of interest.



The technology can be modified to integrate with 3rd party API or databases, such as the audit information needed to add value to the current mapping data.

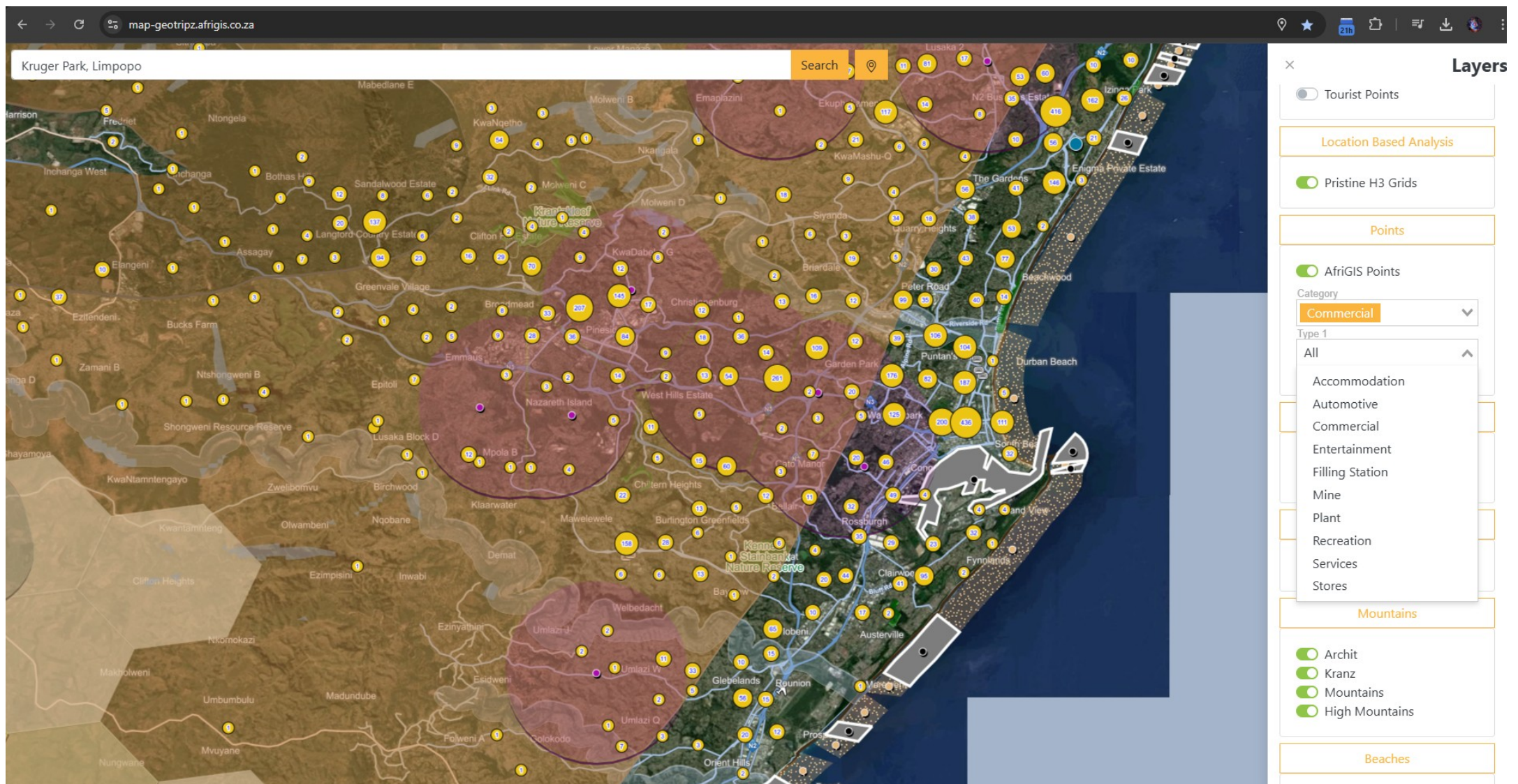
On our team, we have professors and scientists who specialise in behavioural change and self-empowerment, these distinguished associates enable our training to make the required impact on training and potentially job creation outputs.

There are clients that want to make use and invest in coastal locations for the ventures, for them, we have already identified the nature of the coastline (sandy, rocky, pebble, blue flag beaches), we have already done the work of mapping the coastline and determining the geographic nature of the various other local attributes that contributes to their feasibility of their business venture. If the candidate already has a business, we have the information you need to maximise the location.



Some of our layers, like Kranz (Kranzkop) and Mountains have been set with buffers to allow a user to understand impact zones.

We train clients to maximise the resources of the region they are in.



Feature description: cluster map algorithm, a user can zoom in, allowing for names of the point of interest to show on the map.

Scenario: a potential business owner is interested to see the local market activities around their site. Example: wellness activities, kids activities, near by coffee shops and bed and breakfasts, bed and breakfast.

Points

☒ AfriGIS Points

Category

Commercial

Type 1

Accommodation ✕

Entertainment ✕

Recreation ✕

Type 2

All

Resort

Restaurant

Rifle Range

Self Catering

Sport Facility

Sport Stadium

Sports and Adventure

Stables

Tea Garden

Tented Camp

Theatre

Wellness Centre

Category, human vs commercial

Points

☒ AfriGIS Points

Category

Commercial

Type 1

Accommodation ✕

Entertainment ✕

Recreation ✕

Type 2

Amusement Park ✕

Bed and Breakfast ✕

Coffee Shop ✕

Dance Studio ✕

Kids Activity ✕

Wellness Centre ✕

Type 1, drill down

Points

☒ AfriGIS Points

Category

Commercial

Type 1

Accommodation ✕

Entertainment ✕

Recreation ✕

Type 2

Amusement Park ✕

Bed and Breakfast ✕

Coffee Shop ✕

Dance Studio ✕

Kids Activity ✕

Wellness Centre ✕

Resort

Restaurant

Rifle Range

Self Catering

Sport Facility

Sport Stadium

Sports and Adventure

Stables

Tea Garden

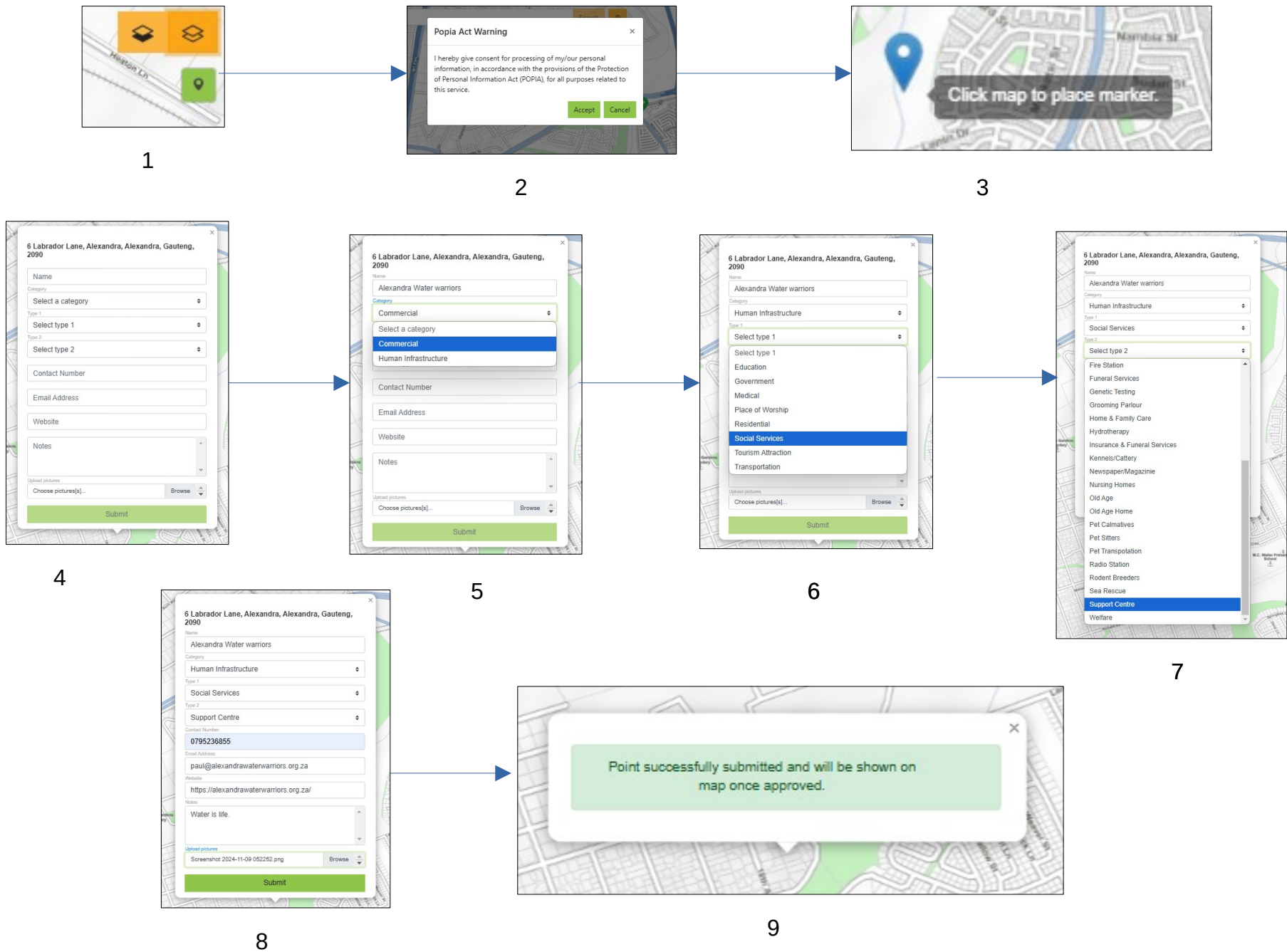
Tented Camp

Theatre

Wellness Centre

Type 2, drill down

Easy, dynamic user-experience.



Easy to use dashboard to allow the user to request an assessment from a specialist.

map-geotripz.afrigis.co.za/admin/points

Menu Logout

Points

Entries Size 25

Search

Name	Created	Status	Contact Number	Actions
Alexandra Water warriors	2024-11-09 05:23	Pending	0795236855	Approve Decline Show details View on map Edit
Cape Town Walking Tours	2024-10-30 14:51	Pending	076 636 9007	Approve Decline Show details View on map Edit
Bartiney Wine Bar	2024-10-30 14:20	Pending	076 348 5374	Approve Decline Show details View on map Edit

1

Update a point

Name

Alexandra Water warriors

Latitude

-26.097378730773

Longitude

28.1028342247009

Category

Human Infrastructure

Type 1

Social Services

Type 2

Support Centre

Contact Number

0795236855

Email Address

paul@alexandrawaterwarriors.org.za

Website

https://alexandrawaterwarriors.org.za/

Notes

Water is life.

Upload pictures

Add new image[s] from file

Browse

Save

Cancel

2

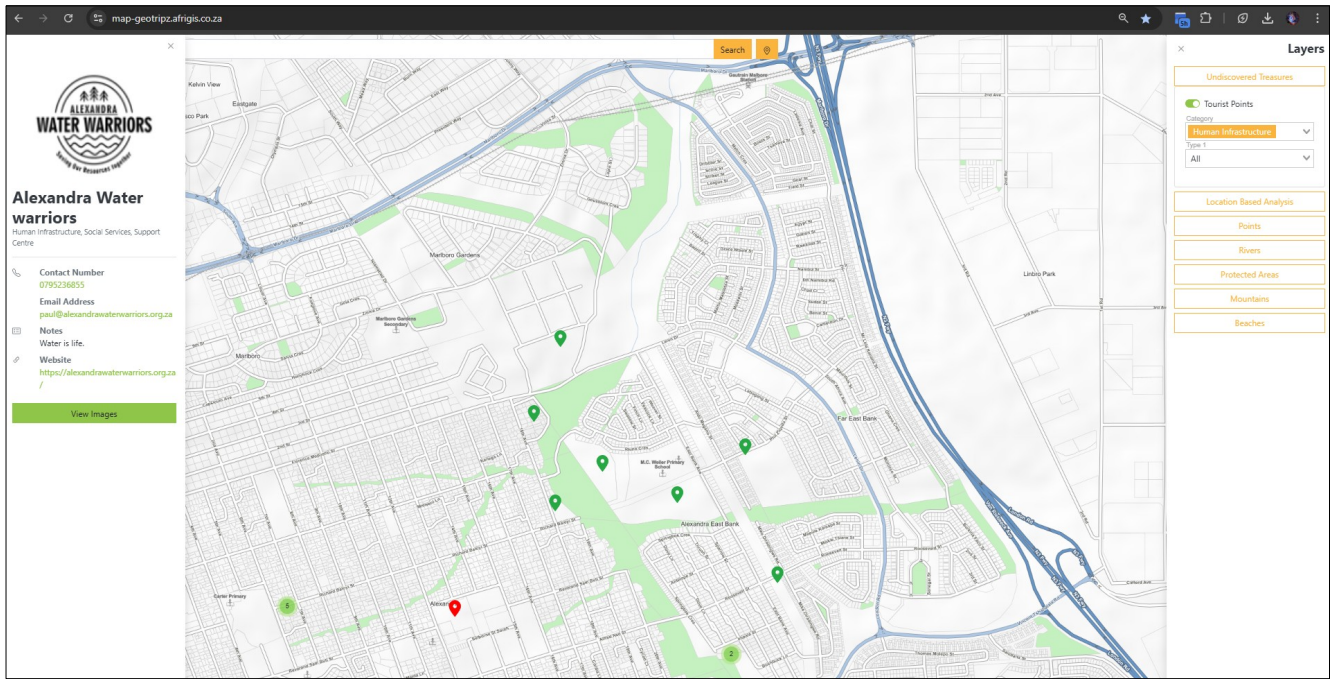
Toggle Point Status

Are you sure you want to update point 'Alexandra Water warriors' status to APPROVED?

Yes

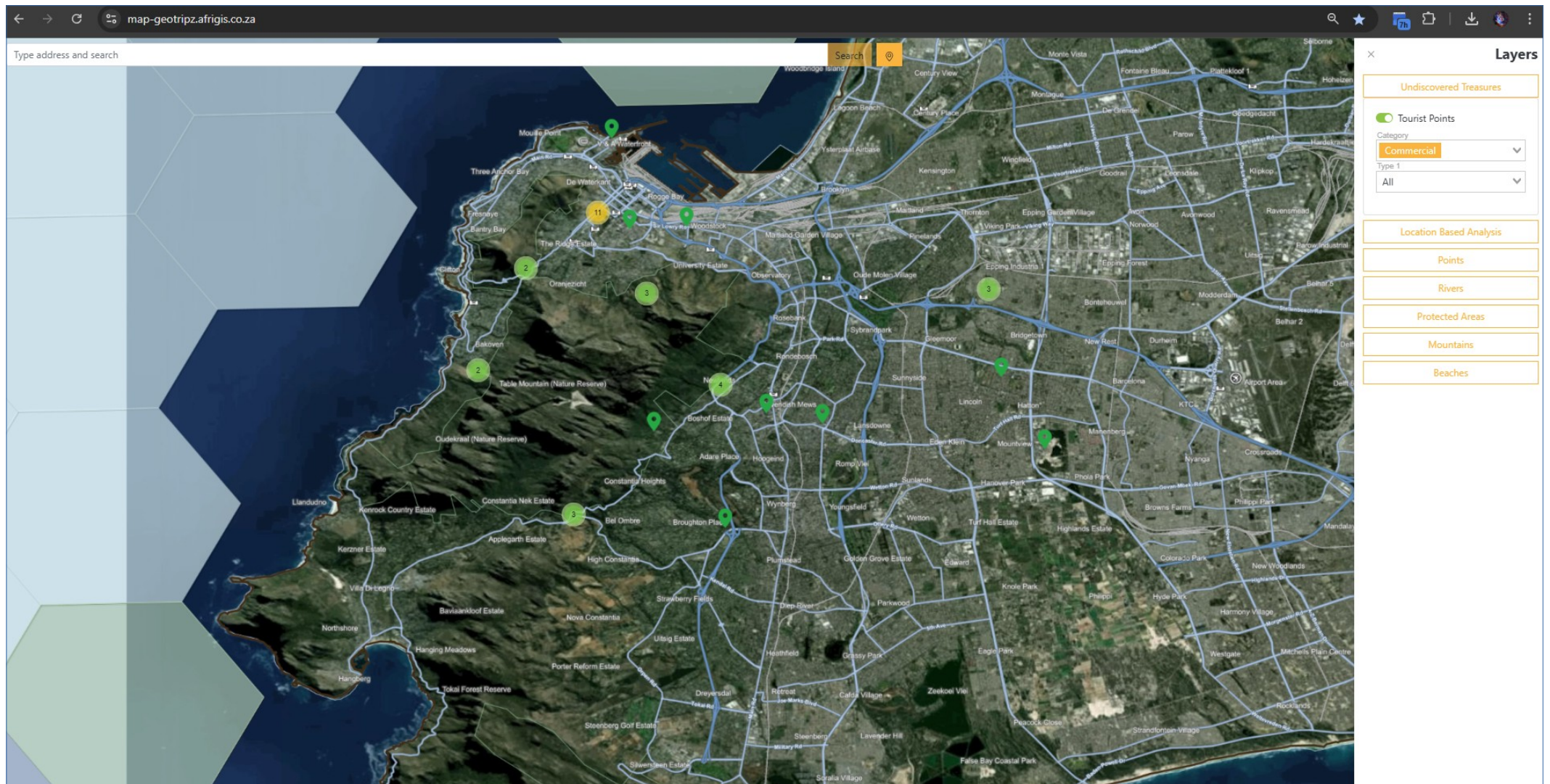
Cancel

3



4

The business owners information will ultimately be visible on the map, so that it can be viewed by other project stakeholders via the drop down options.



In this scenario a client is interested to see where to sell their natural traditional medicine to local commercial sites.

map-geotrip.afrigis.co.za

Gogo's Garden

Commercial, Stores, Curios & Gifts

Contact Number
0718741890

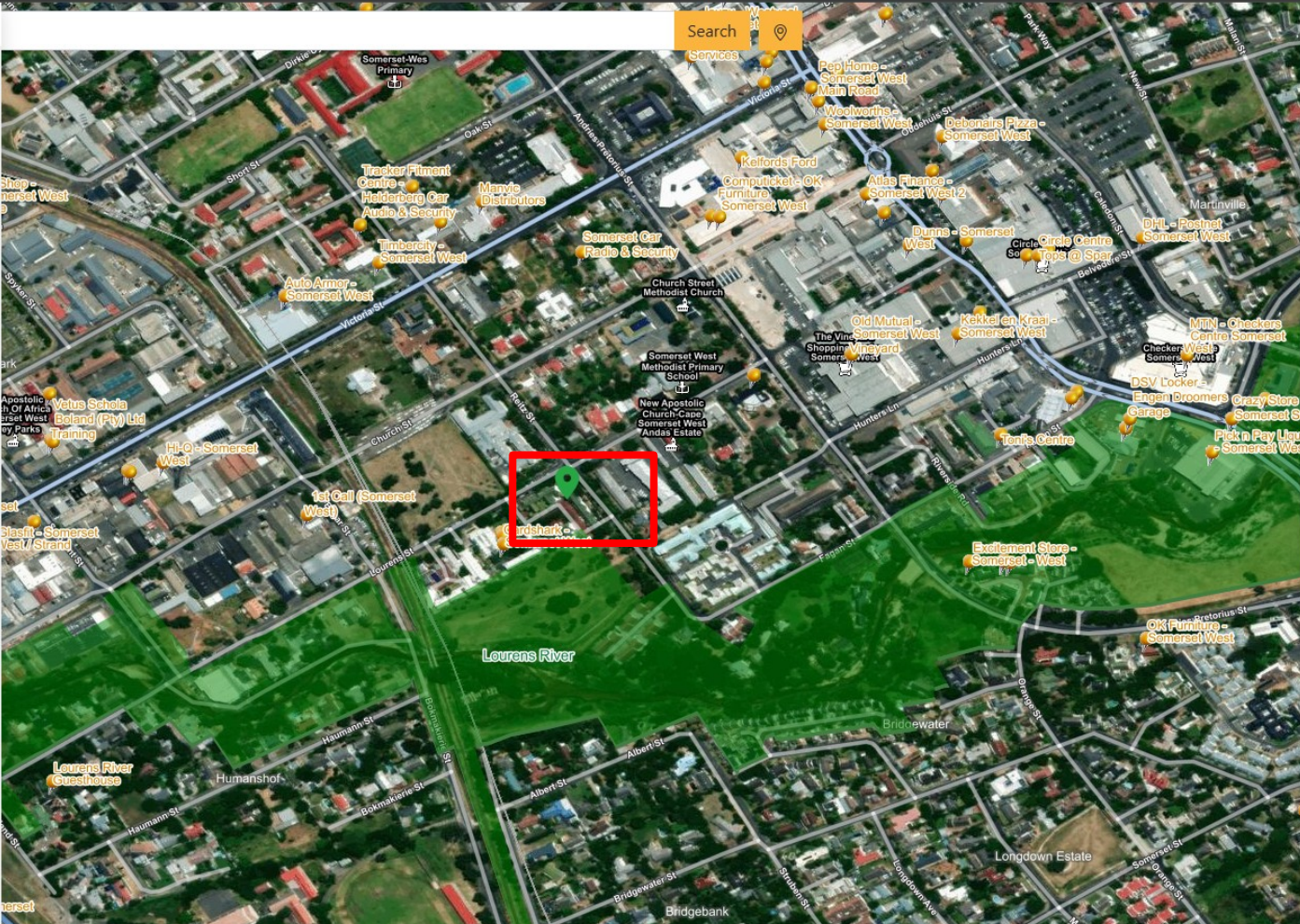
Email Address
info@gogosgarden.co.za

Notes
The seeds of Gogo's Garden Apothecary where sewn in love. The roots are nourished by a deep desire to help you connect to your Spirit. Our two co-founders weave their combined knowledge of magick, healing, herbalism & astrology to bring you spiritual products that are hand-made, locally sourced, and home-spun. Our unique blend of traditional European & African magical traditions offers you quality items that can enhance your spiritual workings, and align you to your heartfelt intentions. These items are best used as suggested, combined with faith, and enhanced by taking real-life action. Each of our spiritual supplies are hand-crafted with focused intention, using sacred herbs & oils, at very specific astrological timings.

Website
<https://gogosgarden.co.za/>

View Images

Search



Layers

Undiscovered Treasures

Tourist Points

Category
Commercial

Type 1
All

Location Based Analysis

Pristine H3 Grids

Points

AfriGIS Points

Category
Commercial

Type 1
All

Rivers

Perennial

Rivers and Dams

Protected Areas

SANBI Parks

Mountains

We will be in consultation with the client to ensure their map reports are aligned to the audit team requirements.

Possible relocation or closure

**Potential site
Turnover prediction:
R700 000 to R800 000**

**Potential site
Turnover prediction:
R800 000 to R900 000**

“Where is where it starts”

We are a proudly South African company, focused on African data. Our data complies with SABS and ISO standards to ensure interoperability. Which means higher confidence levels for accuracy and reduced wastage.

Data Sourcing • AfriGIS datasets (NAD, Street Centre Lines, point data, etc) - Data Catalogue is available. • Data capturing and fieldwork specification, strategy and management • Data brokerage and sourcing Data Services • Data scrubbing, cleaning, and manipulation • Data management and conversion • Data maintenance and updating • Geocoding services (Bulk and over the Internet) • Data processing and quality assurance Analysis and Storage • Database design and implementation (Oracle, SQL, etc) Database administration and management • Alphanumerical and spatial analysis (overlay, display, and query) • Product independent (MapInfo, ESRI, Caliper, Intergraph, AutoDesk

Solutions (Software development around GIS technology to create solutions) • GIS strategy and consulting • Bulk map production • Address matching and Geo-coding • Management Information Systems • Project management portal • Demand Forecasting • Data capturing applications • Routing and logistics • Demographic/customer analysis

Contact us for more information;

Kshetra Govindasamy +27 79 523 6855 (kg@geotripz.co.za)

Brian Civin +27 82 451 0455 (brian@afriGIS.co.za)

Example of our training program, we empower the local to take ownership of there own ABCD, asset based community development.

<https://youtu.be/3KiAX1tOGkM?si=XFiB7Aqc9vW7Ya-N>